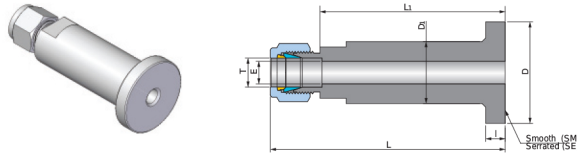


## Lapped Flange Connector

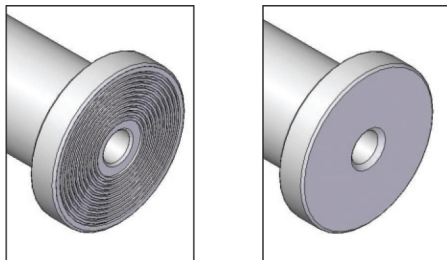
### ULFC



Connects Fractional Tube to Flange

Part No.	Tube OD	Flange Seal	Dimensions (mm)						Flange Surface Finish (Ra, $\mu\text{m}$ )
	T		L	L <sub>1</sub>	l	D	D <sub>1</sub>	d (Min)	
	inch								
ULFC-04-SM	1/4	SM	80.8	56.5	6.5	35.0	22.2	4.8	3.2 - 6.3
ULFC-04-SE	1/4	SE	80.8	56.5	6.5	35.0	22.2	4.8	6.3 - 12.5
ULFC-06-SM	3/8	SM	82.3	56.5	6.5	35.0	22.2	7.1	3.2 - 6.3
ULFC-06-SE	3/8	SE	82.3	56.5	6.5	35.0	22.2	7.1	6.3 - 12.5
ULFC-08-SM	1/2	SM	84.8	56.5	6.5	35.0	22.2	10.4	3.2 - 6.3
ULFC-08-SE	1/2	SE	84.8	56.5	6.5	35.0	22.2	10.4	6.3 - 12.5

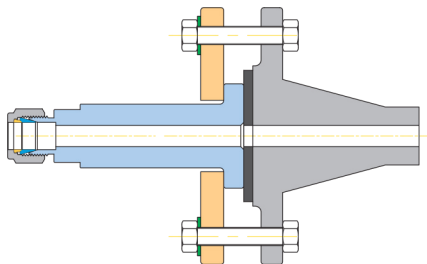
Uni-Lok Lapped Flange Connector connects process flange to instrument. Kor-Lok port is constructed integrally out of ANSI B16.5 Class 2500 flange. The flange seal surface has Smooth (SM) and Concentric Serrated (SE).



SE-Serrated

SM-Smooth

Kor-Lok Lapped Flange Connector is installed into slip-on and welding neck flanges, using sealing gasket on the flange seal face.



Dimensions are for reference only and are subject to change without prior notice.